

# Infusion Studio™

## Zebra Printer Installation

### 1.0 Introduction

This document contains the instructions for installing and configuring the Zebra printer driver on each workstation.

The following steps must be performed:

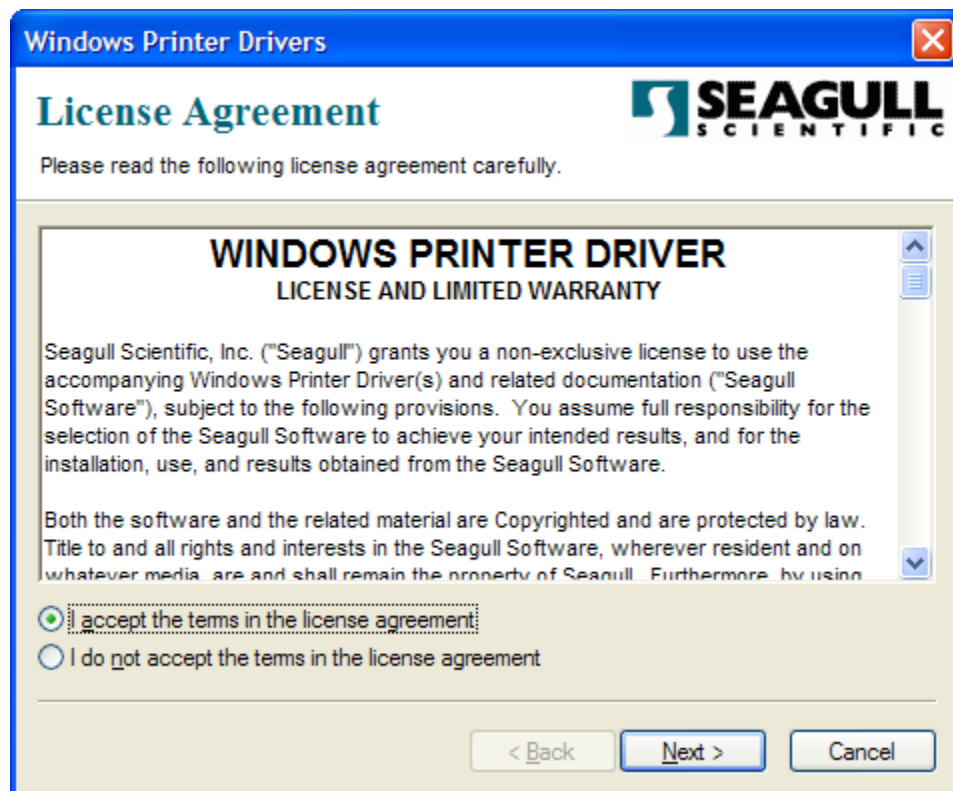
- Install Zebra printer driver on all workstations.
- Configure Zebra user configuration for all workstation users.

### 2.0 Install Zebra Printer Driver

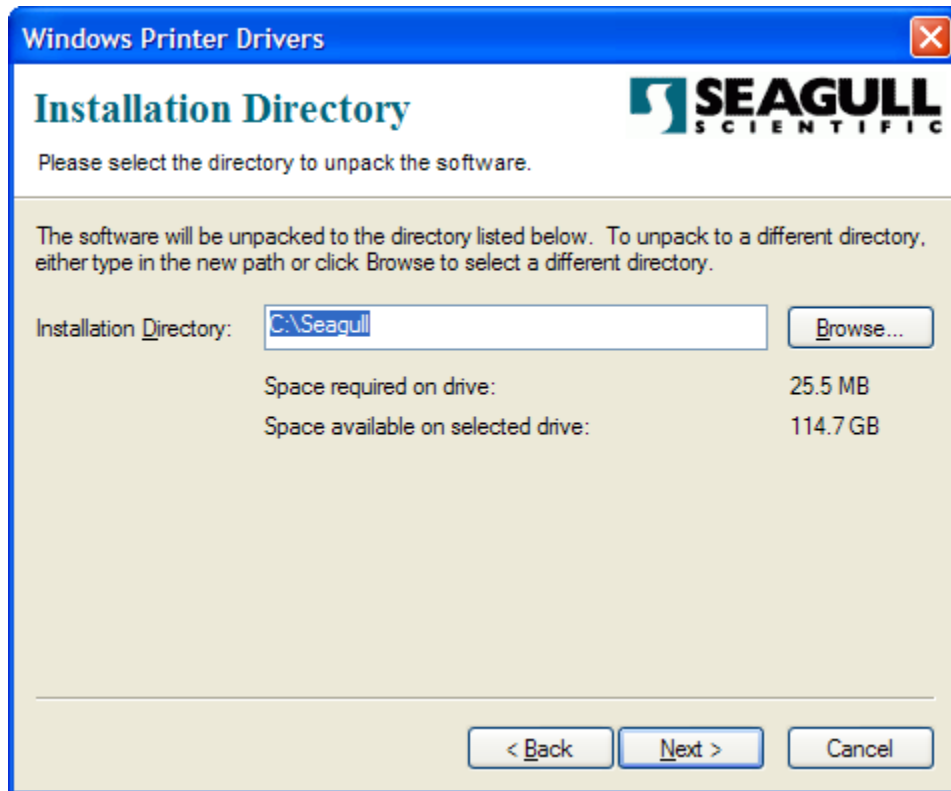
Each Windows 2000 Professional or Windows XP Professional workstation that will create or approve orders must have the Zebra printer driver installed on it.

Use the following instructions to install the Zebra printer driver on each workstation:

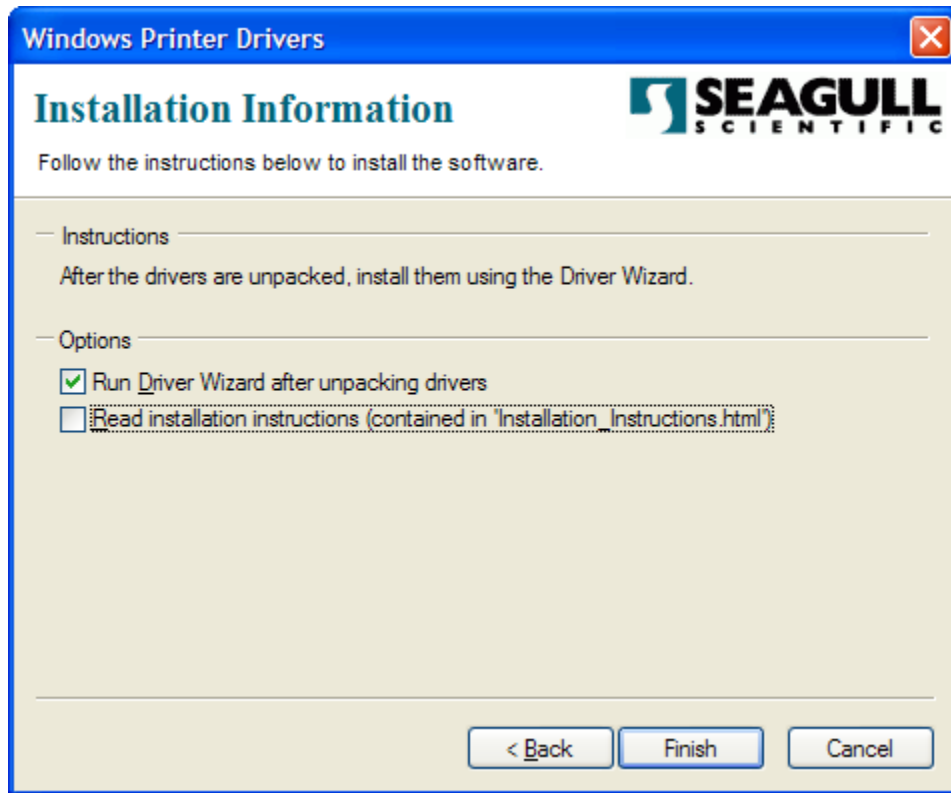
1. Run the Zebra printer driver setup program on the workstation.



1. Select "I accept the terms in the license agreement" and press the **Next** button.



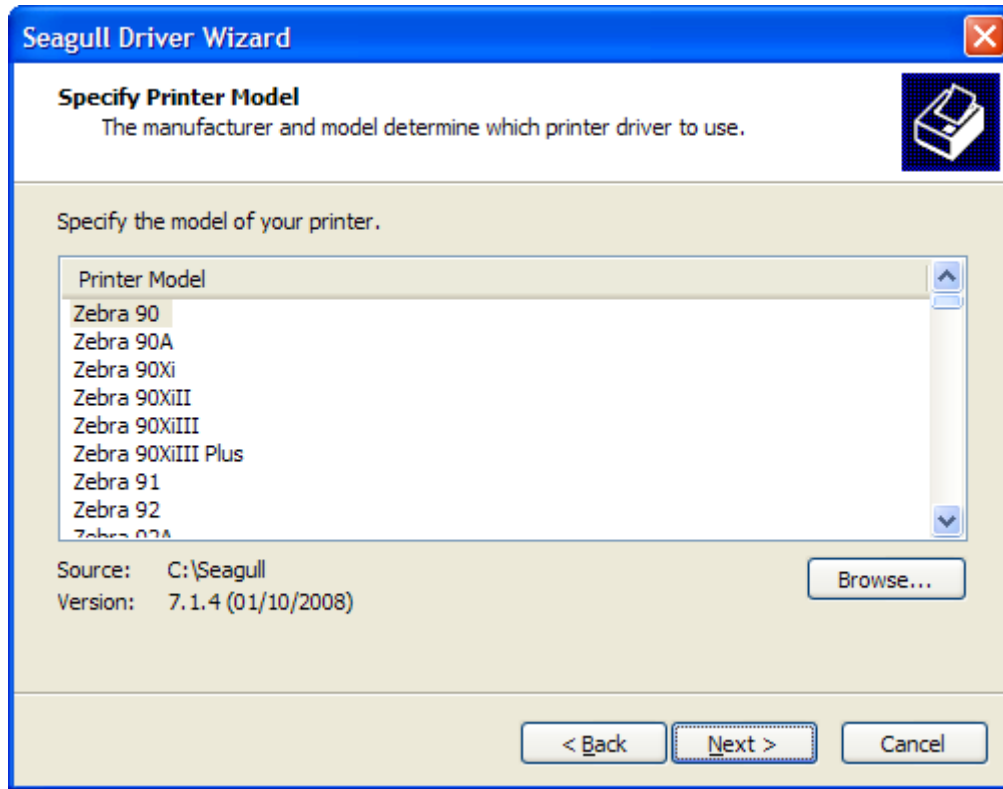
2. Keep the default installation directory or enter the desired installation directory for the printer driver installation. This directory can be removed after the installation process has completed. Press the **Next** button to continue.



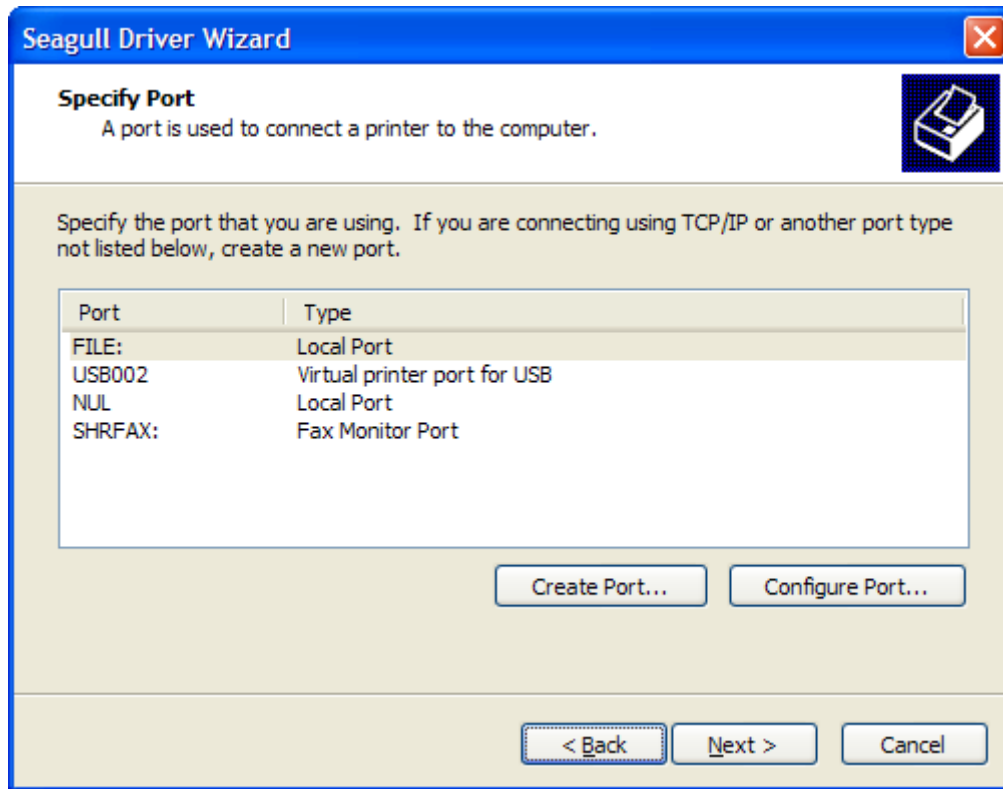
3. Select the “Install printer drivers” radio button and press the **Next** button.



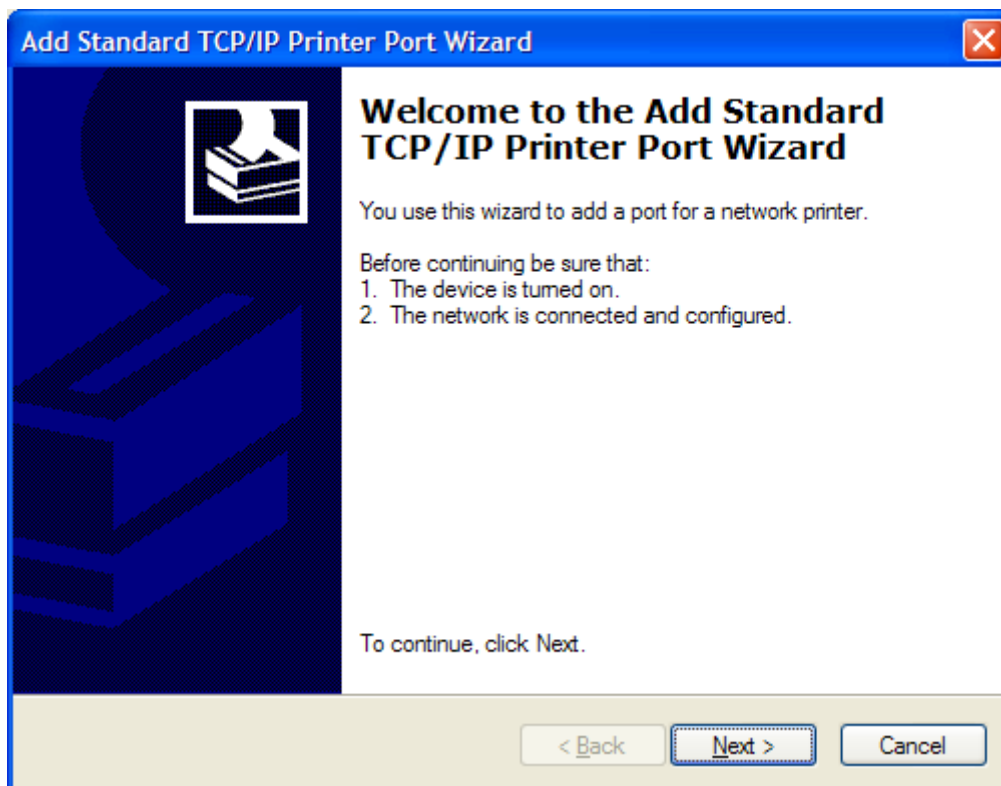
4. Select the appropriate printer from the list of Printer Models and press the **Next** button to continue.



5. Press the "Create Port" button for a network connection to the printer or select the appropriate local printer from the list.



6. If a network connection is used, then select "Standard TCP/IP Port" from the list and press the **New Port** button.



7. The Standard TCP/IP Printer Port Wizard appears. Press the **Next** button.

**Add Standard TCP/IP Printer Port Wizard**

**Add Port**  
For which device do you want to add a port?

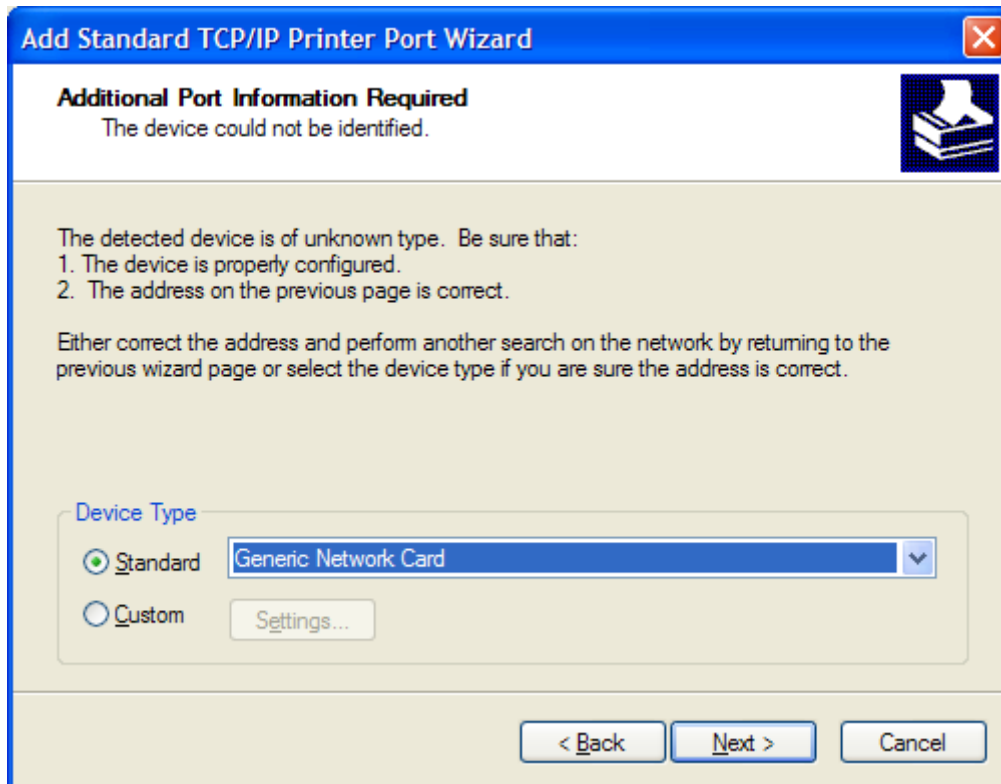
Enter the Printer Name or IP address, and a port name for the desired device.

Printer Name or IP Address: 192.168.1.10

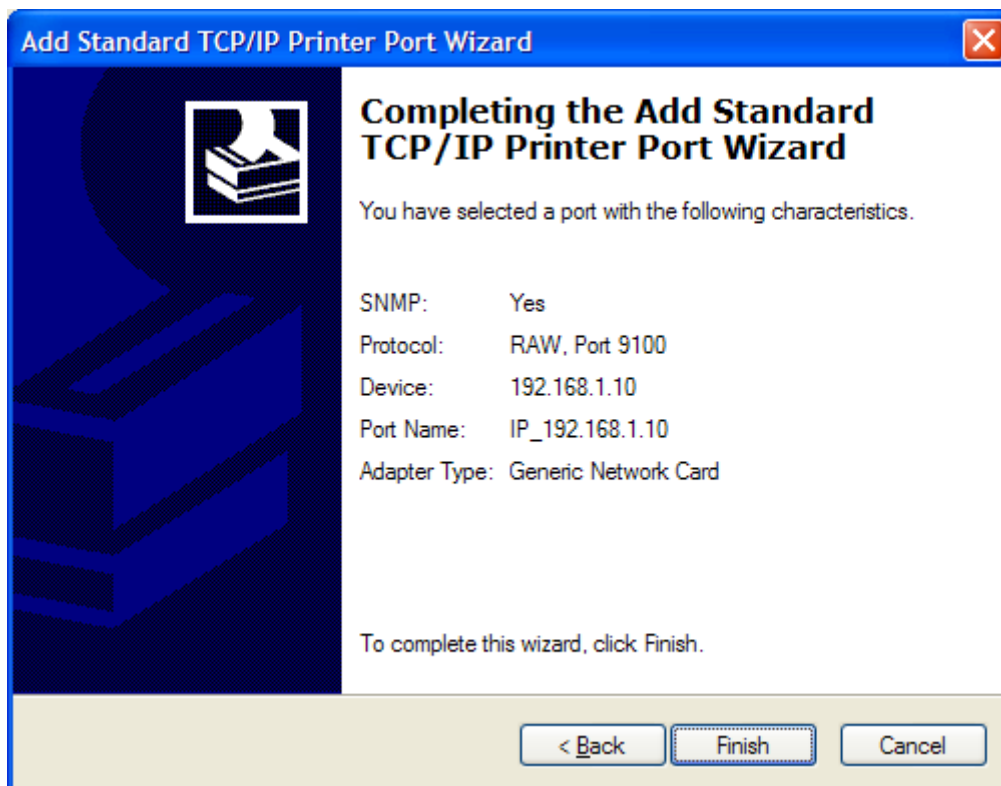
Port Name: IP\_192.168.1.10

< Back   Next >   Cancel

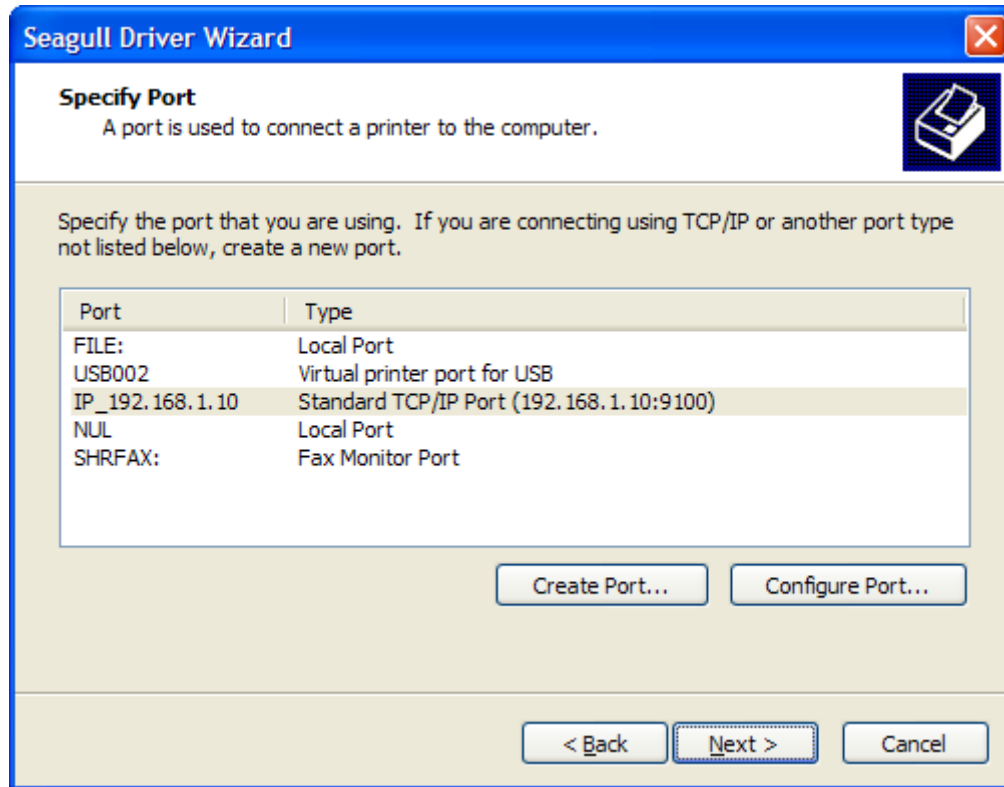
8. Enter the IP address of the printer and press the **Next** button.



9. Keep the “Standard” radio button selected and the “Generic Network Card” selection and press the **Next** button.

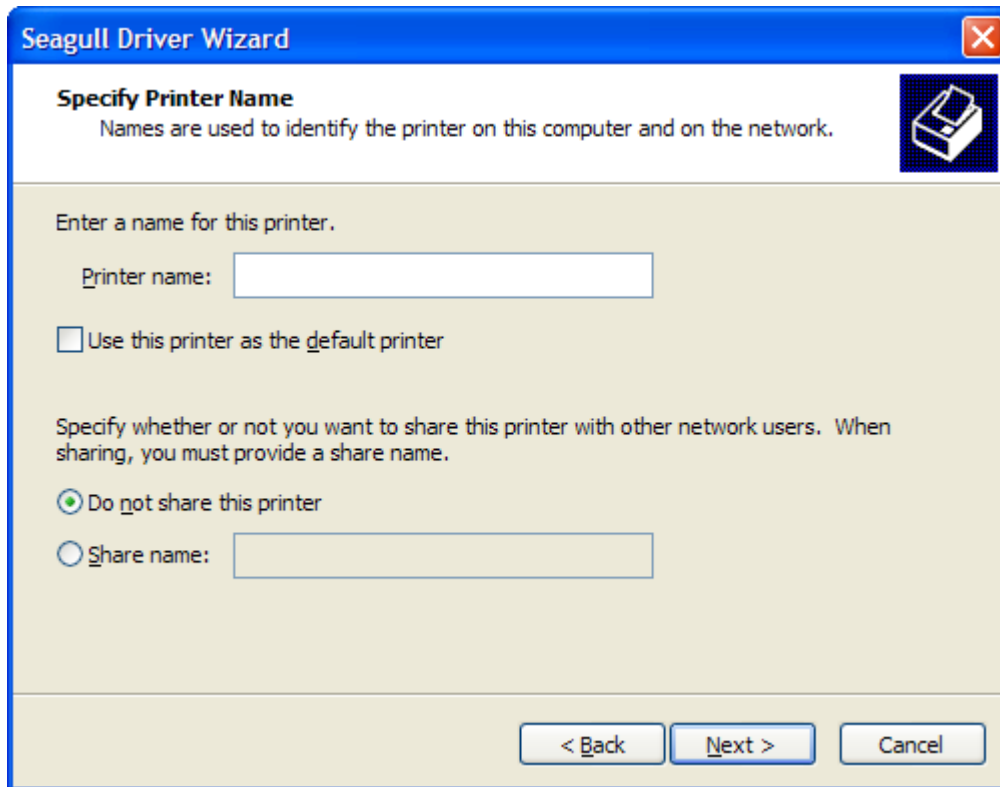


10. Press the **Close** button in the New Port dialog box to finish adding the new port and then press the **Next** button to continue the process.



11. Specify the name of the Zebra printer.

**NOTE:** The printer name should be exactly the same on all workstations for the Zebra printer.



12. Uncheck the “Use this printer as the default printer” check box and press the **Next** button to continue.
13. Press the **Finish** button to add the new printer. The Zebra printer is now installed on the workstation.

### 3.0 Zebra User Printer Configuration

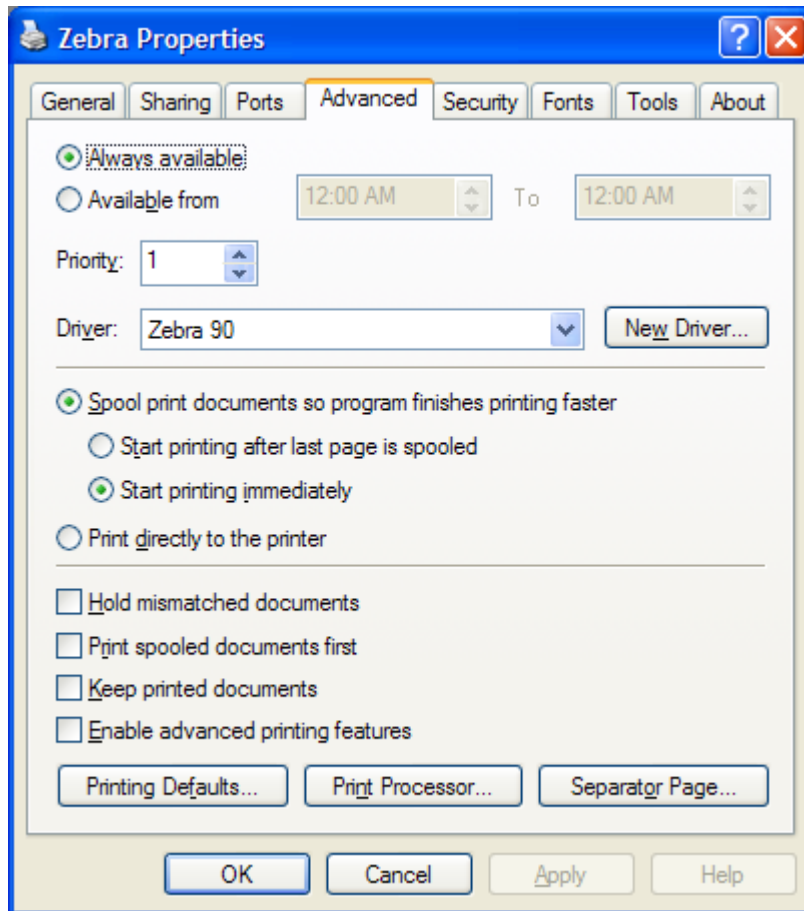
Each user on a workstation has unique printer settings. The default settings of the Zebra printer driver can be set for all users of a workstation.

Use the following instructions to configure the Zebra driver:

1. Right-click on the Zebra printer in the “Printers and Faxes” control panel applet and select the “Properties...” menu item.



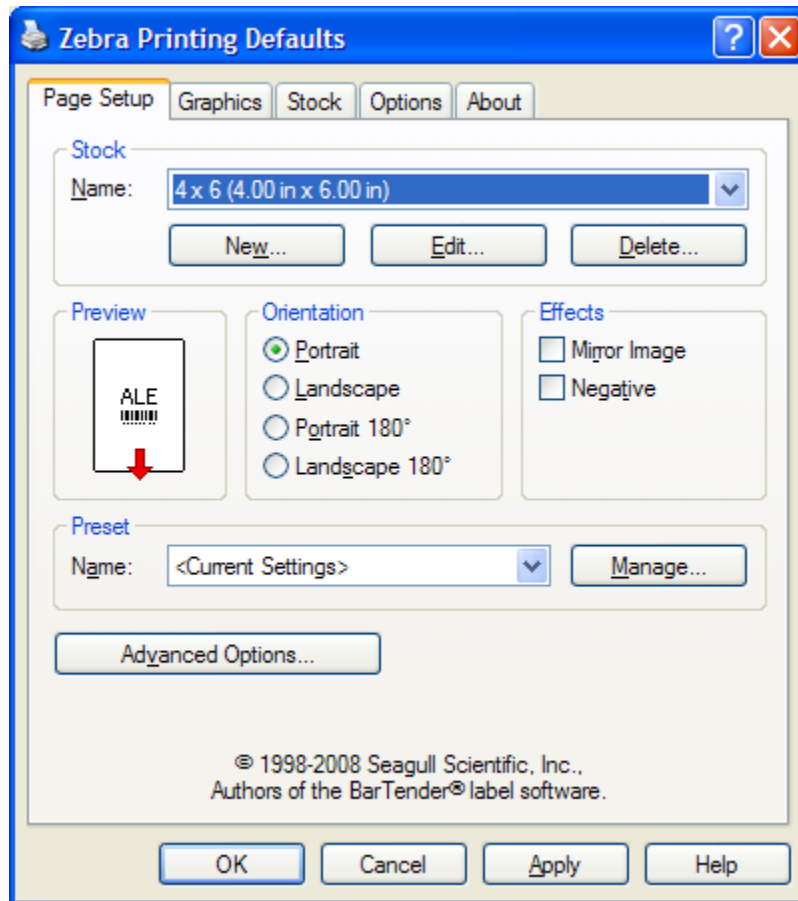
2. Select the Advanced tab.



3. Press the **Printing Defaults** button.



4. Select the Page Setup tab.



5. Select the “4 x6 (4.00 in x 6.00 in)” item in the Stock Name drop-down list and press the **OK** button.
6. In the General tab, press the **Print Test Page** button. A test label should print on the printer.
7. Press the **OK** button to close the printer driver configuration properties.