

Infusion Studio™

Datamax Printer Installation

1.0 Introduction

This document contains the instructions to configure the Datamax printer for network operation and how to install and configure the Datamax printer driver on each workstation.

The following steps must be performed:

- Configure Datamax printer for network operation.
- Install Datamax printer driver on all workstations.
- Configure Datamax user configuration for all workstation users.

2.0 Configure Datamax Printer for Network Operation

The Datamax label printer has a parallel port and a NIC interface that can be used simultaneously. The parallel port can be used as the traditional LPT1 port. The NIC interface can be configured using the printer's control panel.

The following sections describe the procedure for configuring and verifying the network configuration for the printer.

2.1 Using the Printer's Control Panel to Configure the NIC Adapter

Use the following steps to assign a static IP address for the printer:

1. Press the **Menu** button.
2. Press the **Pause** button twice until the "Communications" submenu appears on the display and then press the **Cancel** button to select the sub menu.
3. Press the **Pause** button twice until the "NIC Adapter" submenu appears on the display and then press the **Cancel** button to select the submenu.
4. The "IP Address" option appears on the display. Press the **Cancel** button to select the option to make a change.
5. Using the **Pause** button to decrease the flashing numbers, the **Feed** button to increase the flashing numbers, and the Menu button to move to the next set of numbers configure the network address. Press the **Menu** button when finished.
6. Press the **Pause** button to move to the "Subnet Mask" option and press the **Cancel** button to select the option to make a change.
7. Using the **Pause** button to decrease the flashing numbers, the **Feed** button to increase the flashing numbers, and the Menu button to move to the next set of numbers configure the printer's network address. Press the **Menu** button when finished.
8. Press the **Pause** button to move to the "Gateway" option and press the **Cancel** button to select the option to make a change.
9. Using the **Pause** button to decrease the flashing numbers, the **Feed** button to increase the flashing numbers, and the Menu button to move to the next set of numbers configure the printer's network address. Press the **Menu** button when finished.
10. Press the **Pause** button to move to the "Discovery" option and press the **Cancel** button to select the option to make a change.

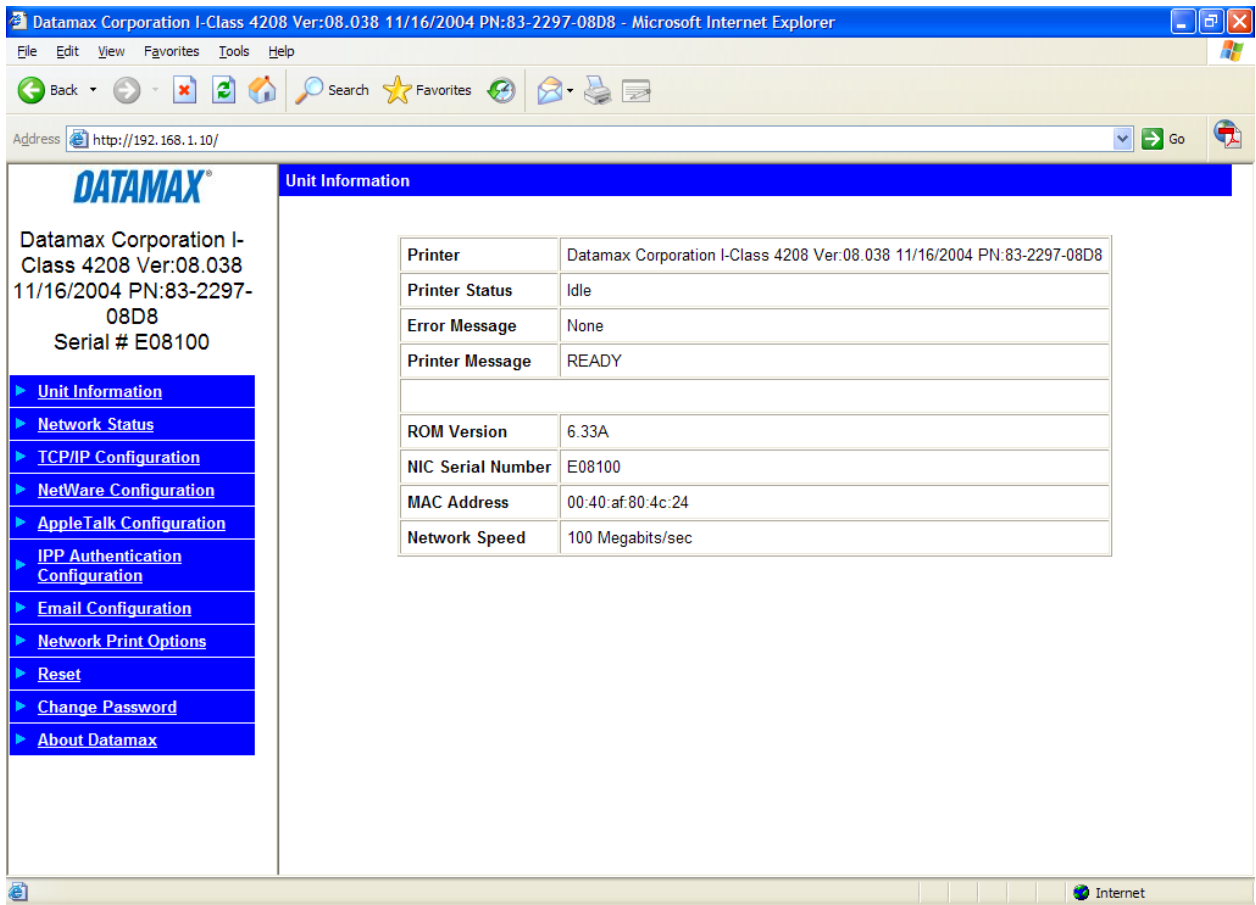
11. Press the **Feed** button until the “Disabled” option appears on the display and then press the **Cancel** button to select the option. An asterisk “*” will appear next to the option. Press the **Menu** button when finished.
12. Press the **Menu** button again and when prompted to save changes, press the **Cancel** button.
13. Continue to press the **Menu** button until the “Ready” appears on the display.

2.2 Verifying the Printer’s Network Configuration

Use the following steps to verify that the printer has been correctly configured for the network:

1. Run Internet Explorer (or an alternative web browser) from any computer on the network.
2. In the browser’s address field, enter the IP address assigned to the printer in the previous section. For example, `http://192.168.1.10`.

The Datamax web configuration should appear in the browser’s window:



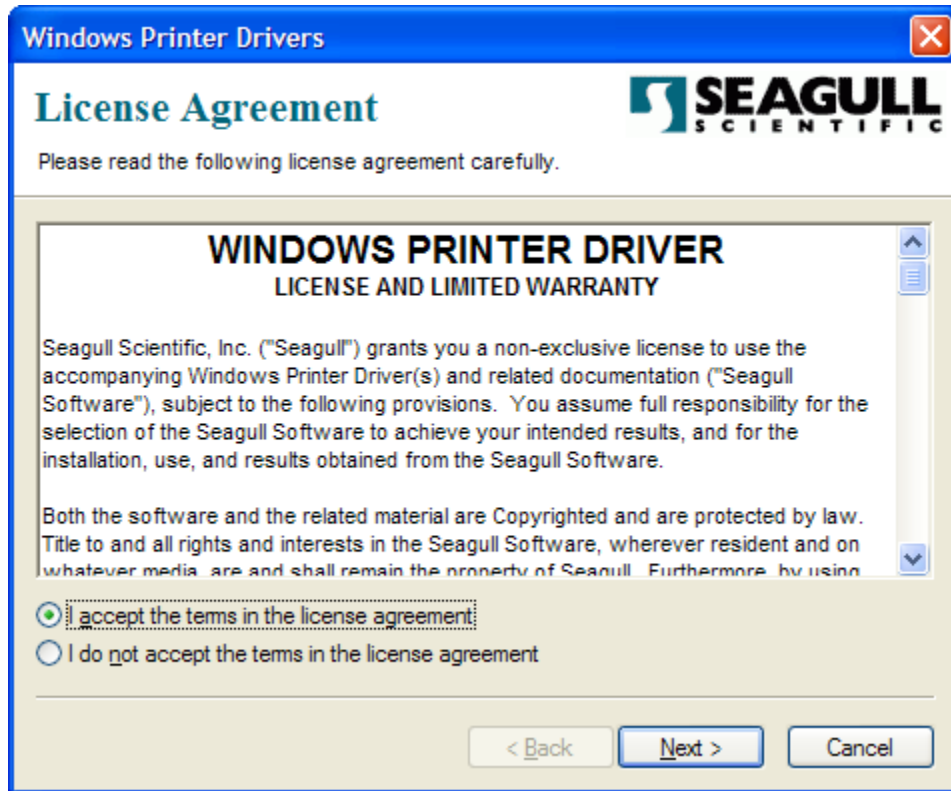
3. Select the “TCP/IP Configuration” link on the page to make any additional optional changes to the network protocol configuration.

3.0 Install Datamax Printer Driver

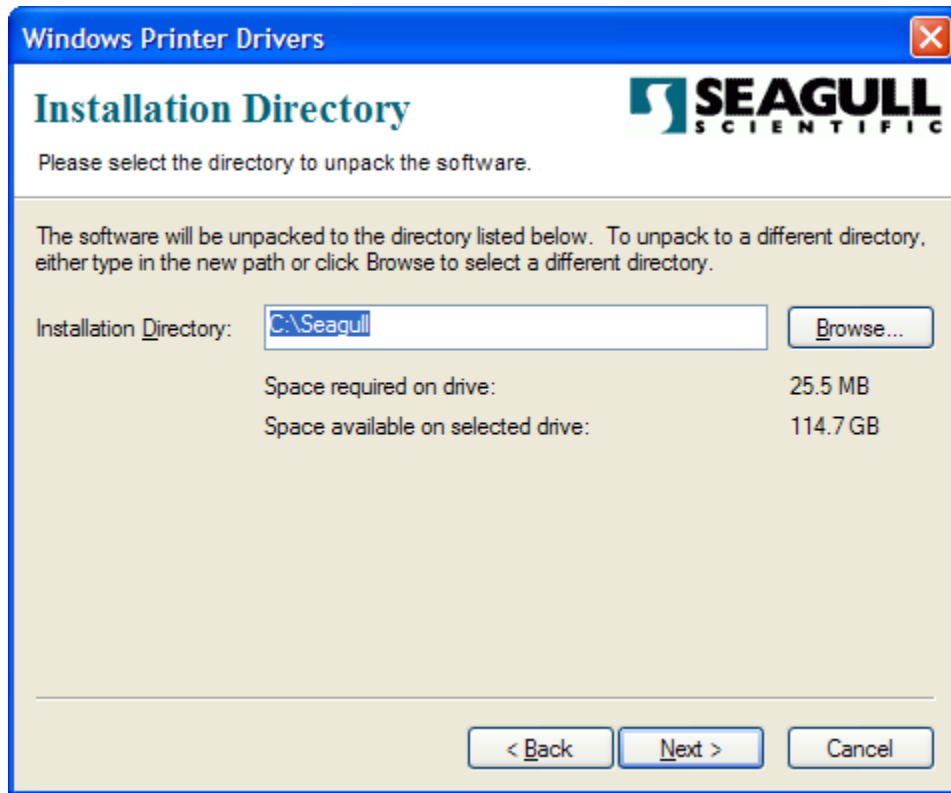
Each Windows 2000 Professional or Windows XP Professional workstation that will create or approve orders must have the Datamax printer driver installed on it.

Use the following instructions to install the Datamax printer driver on each workstation:

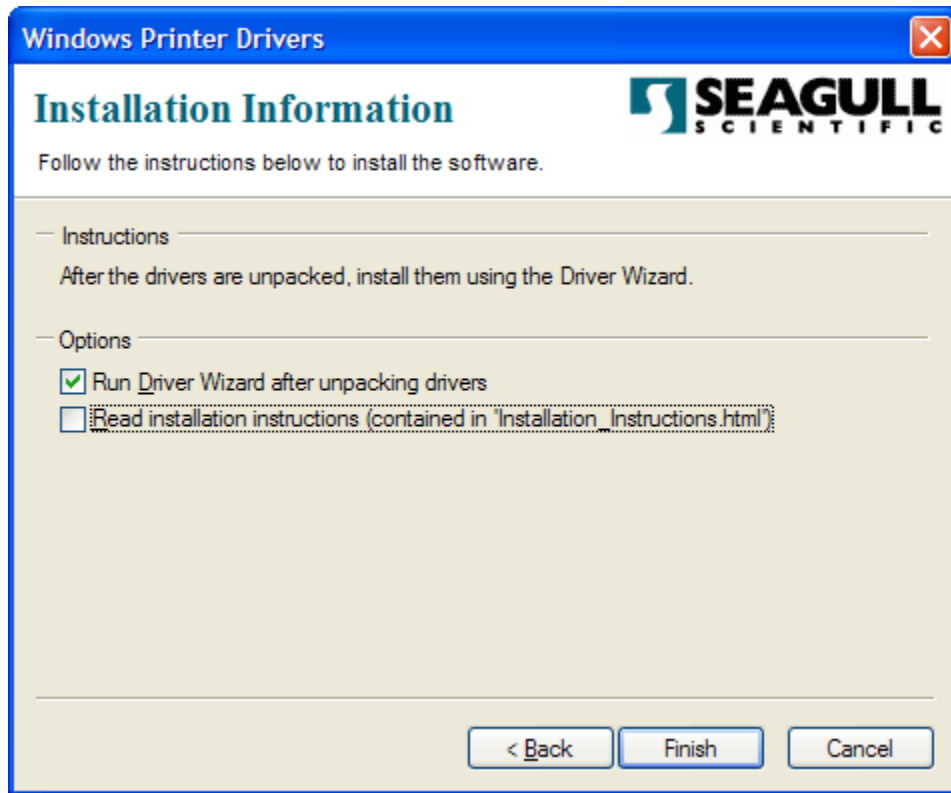
1. Run the Datamax printer driver setup program on the workstation.



4. Select "I accept the terms in the license agreement" and press the **Next** button.



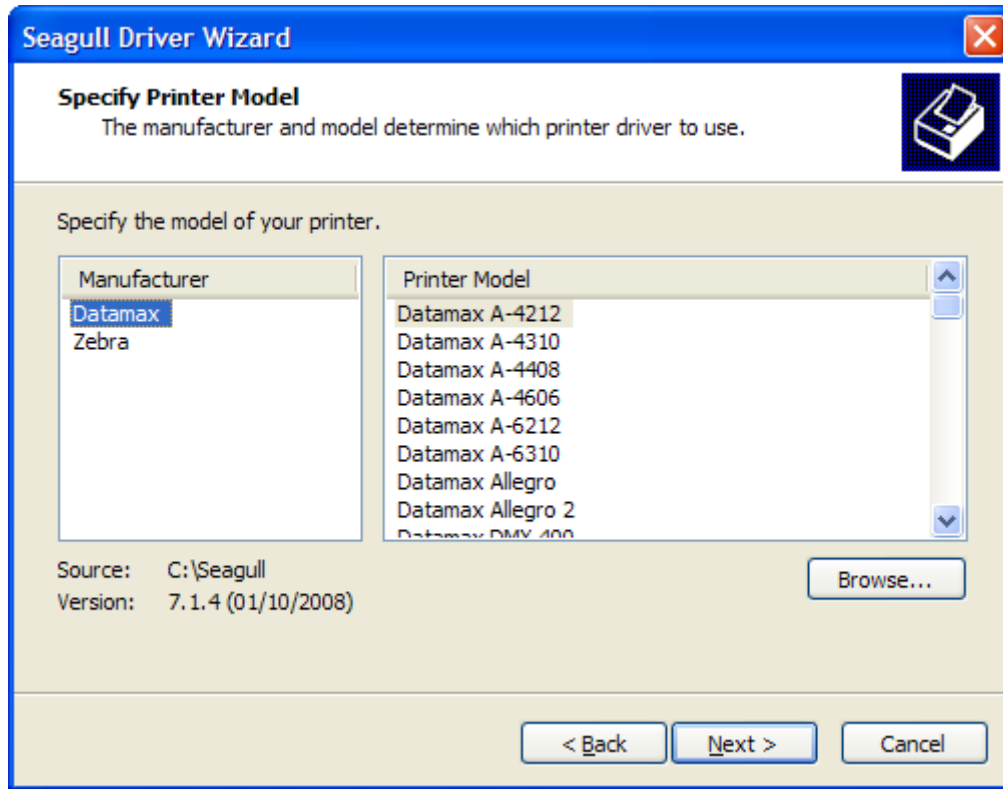
5. Keep the default installation directory or enter the desired installation directory for the printer driver installation. This directory can be removed after the installation process has completed. Press the **Next** button to continue.



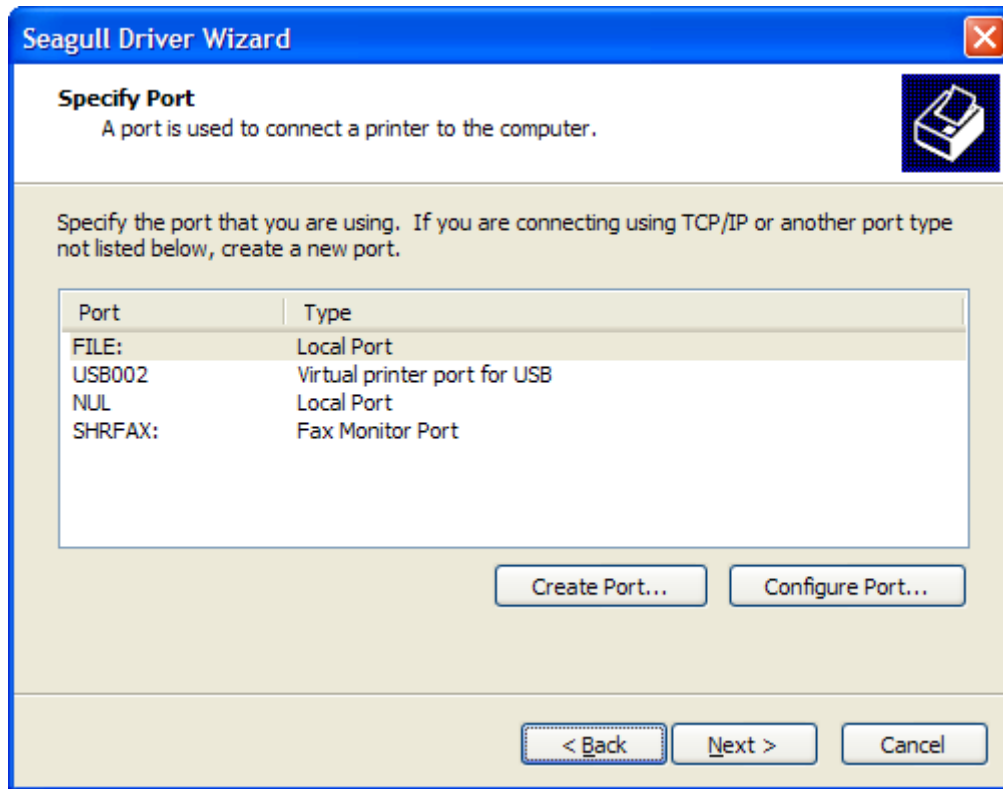
6. Select the “Install printer drivers” radio button and press the **Next** button.



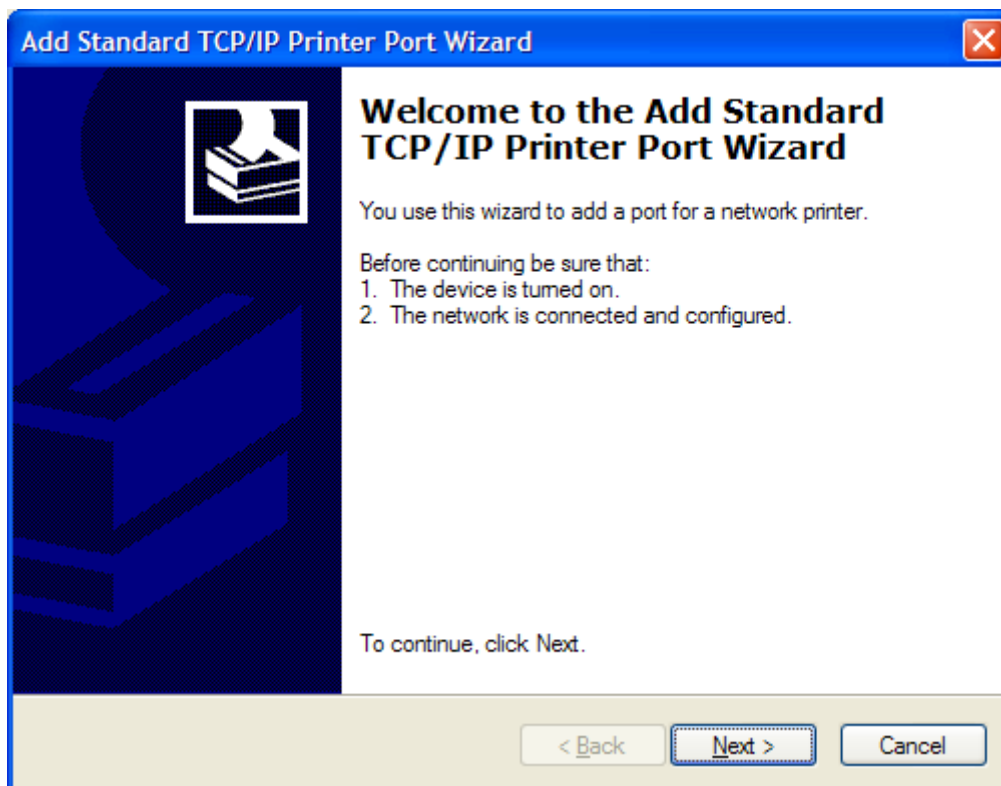
7. Select the “Datamax I-4208” printer from the list of Printer Models and press the **Next** button to continue.



8. Press the “Create Port” button for a network connection to the printer or select the appropriate local printer from the list.



9. If a network connection is used, then select “Standard TCP/IP Port” from the list and press the **New Port** button.



10. The Standard TCP/IP Printer Port Wizard appears. Press the **Next** button.

Add Standard TCP/IP Printer Port Wizard

Add Port
For which device do you want to add a port?

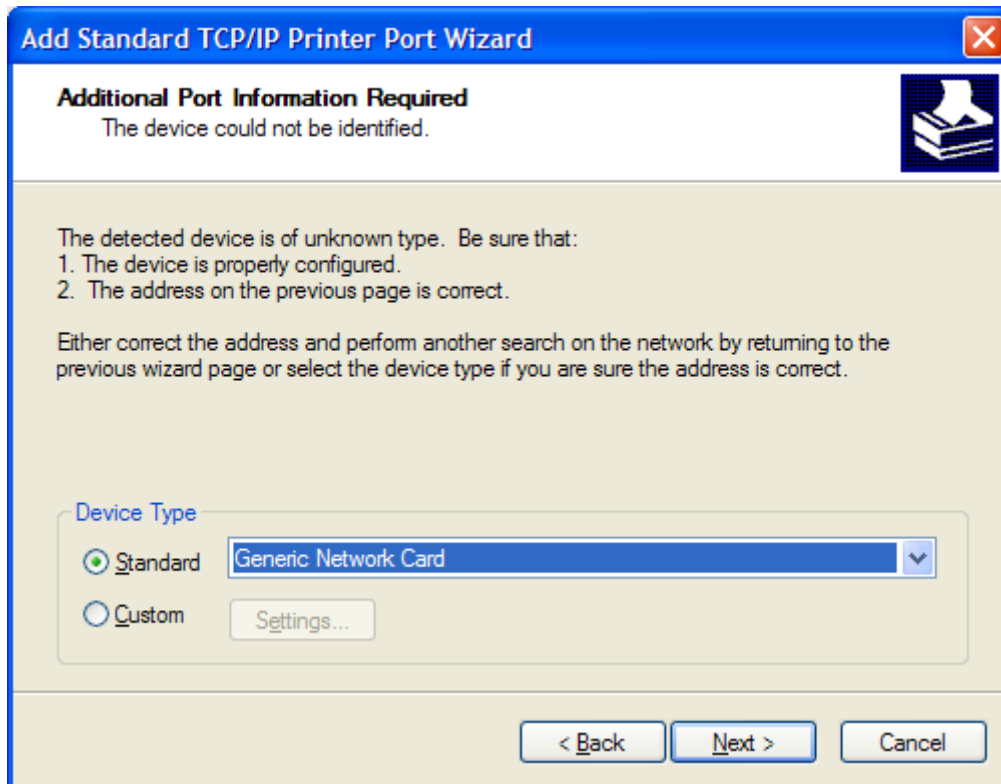
Enter the Printer Name or IP address, and a port name for the desired device.

Printer Name or IP Address: 192.168.1.10

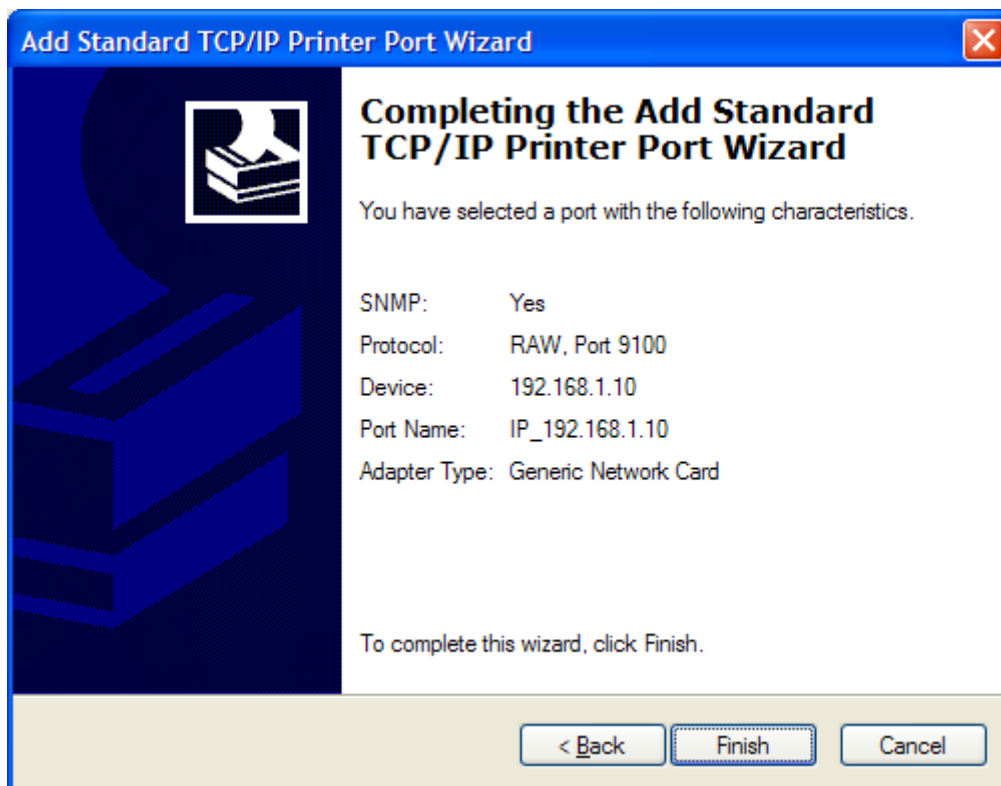
Port Name: IP_192.168.1.10

< Back Next > Cancel

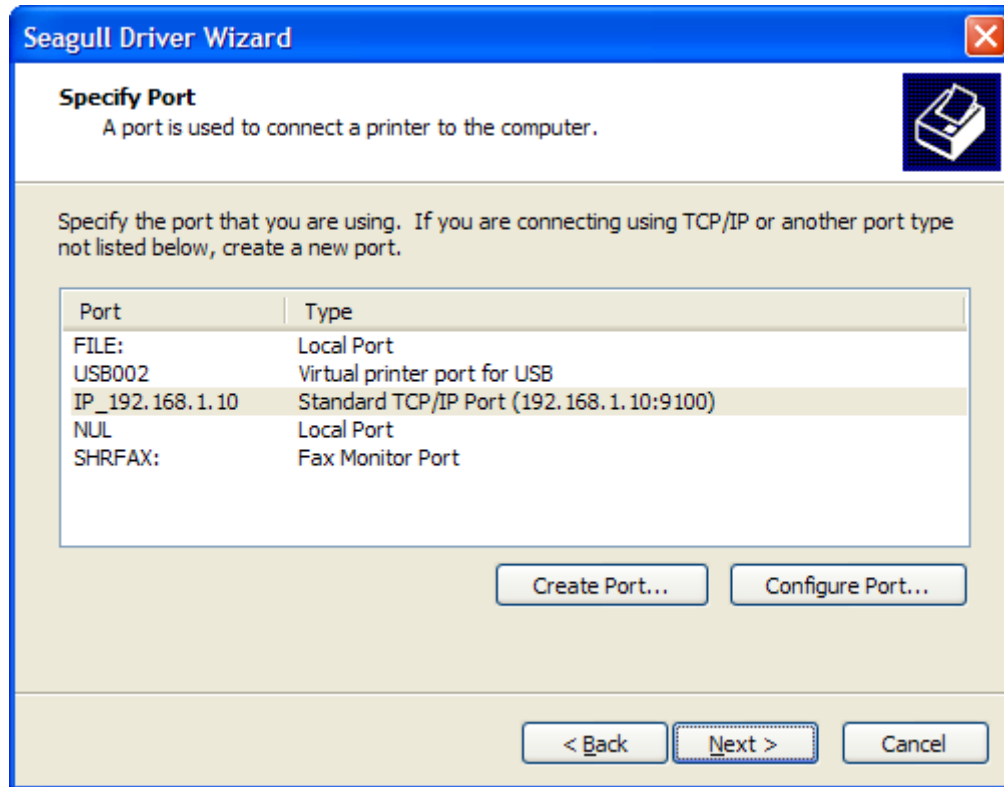
11. Enter the IP address of the printer and press the **Next** button.



12. Keep the “Standard” radio button selected and the “Generic Network Card” selection and press the **Next** button.

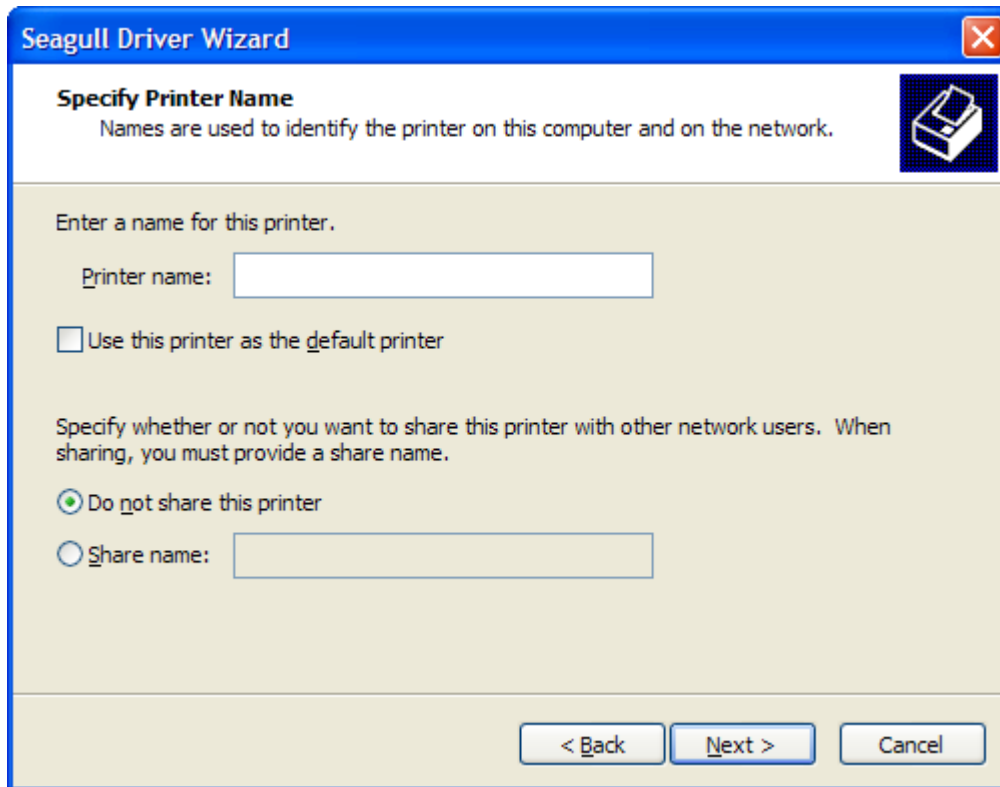


13. Press the **Close** button in the New Port dialog box to finish adding the new port and then press the **Next** button to continue the process.



14. Specify the name of the Datamax printer.

NOTE: The printer name should be exactly the same on all workstations for the Datamax printer.



15. Uncheck the “Use this printer as the default printer” check box and press the **Next** button to continue.
16. Press the **Finish** button to add the new printer. The Datamax printer is now installed on the workstation.

4.0 Datamax User Printer Configuration

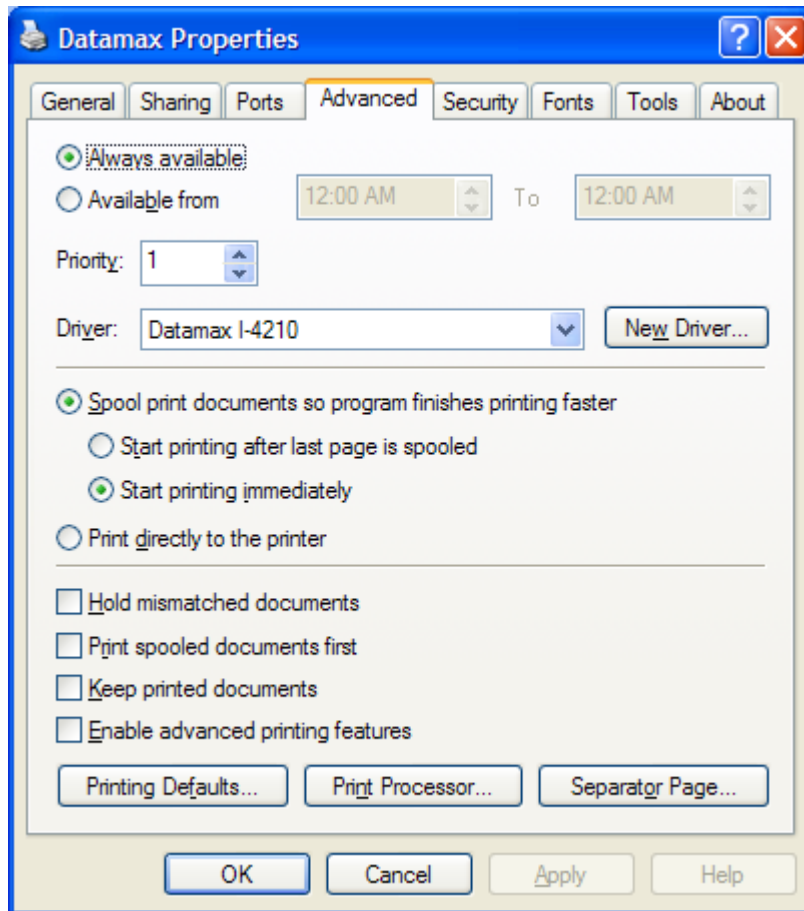
Each user on a workstation has unique printer settings. The default settings of the Datamax printer driver can be set for all users of a workstation.

Use the following instructions to configure the Datamax driver:

1. Right-click on the Datamax printer in the “Printers and Faxes” control panel applet and select the “Properties...” menu item.



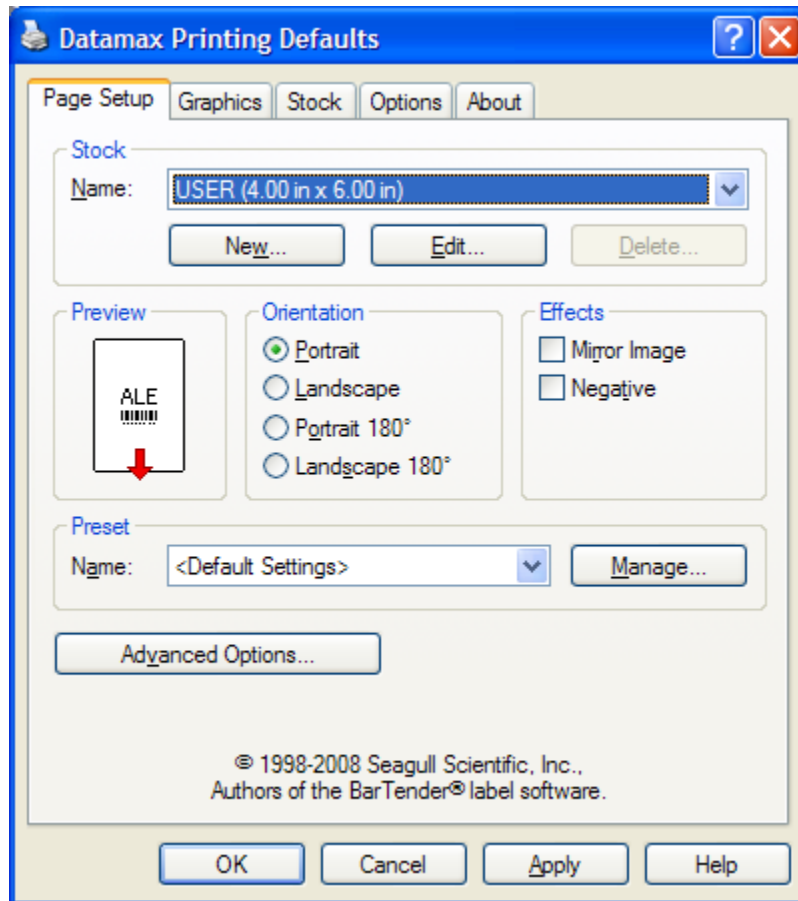
2. Select the Advanced tab.



3. Press the **Printing Defaults** button.



4. Select the Page Setup tab.



5. Select the “4 x6 (4.00 in x 6.00 in)” item in the Stock Name drop-down list and press the **OK** button.
6. In the General tab, press the **Print Test Page** button. A test label should print on the printer.
7. Press the **OK** button to close the printer driver configuration properties.