

# Infusion Studio™

## ScrewDrivers Installation and Configuration

### 1.0 Introduction

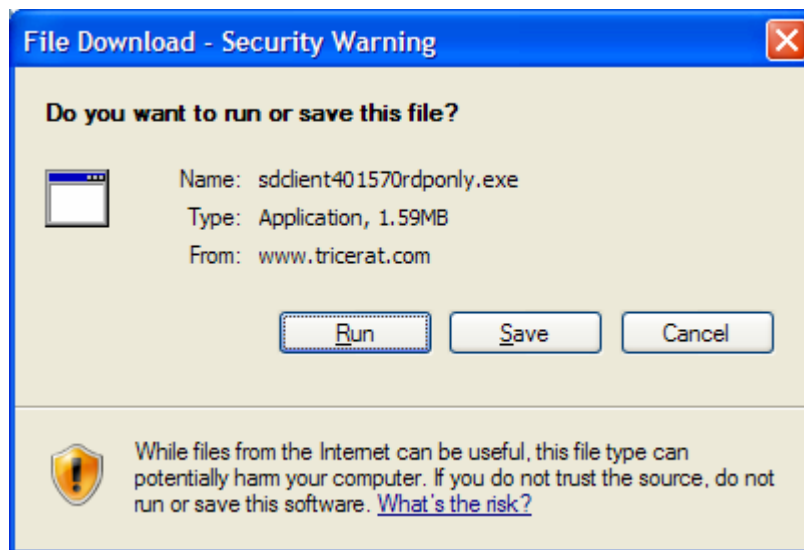
This document contains the instructions for installing and configuring the triCerat ScrewDrivers client software for each workstation that will access the Terminal Server to run the Infusion Studio application.

### 2.0 Install the ScrewDrivers Client

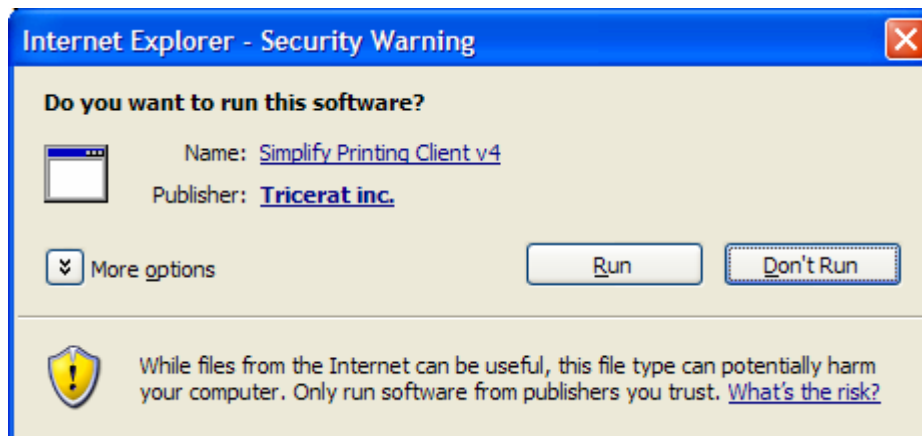
Use the following instructions to install the ScrewDrivers client on each workstation:

1. Click on the download link to run the install program.

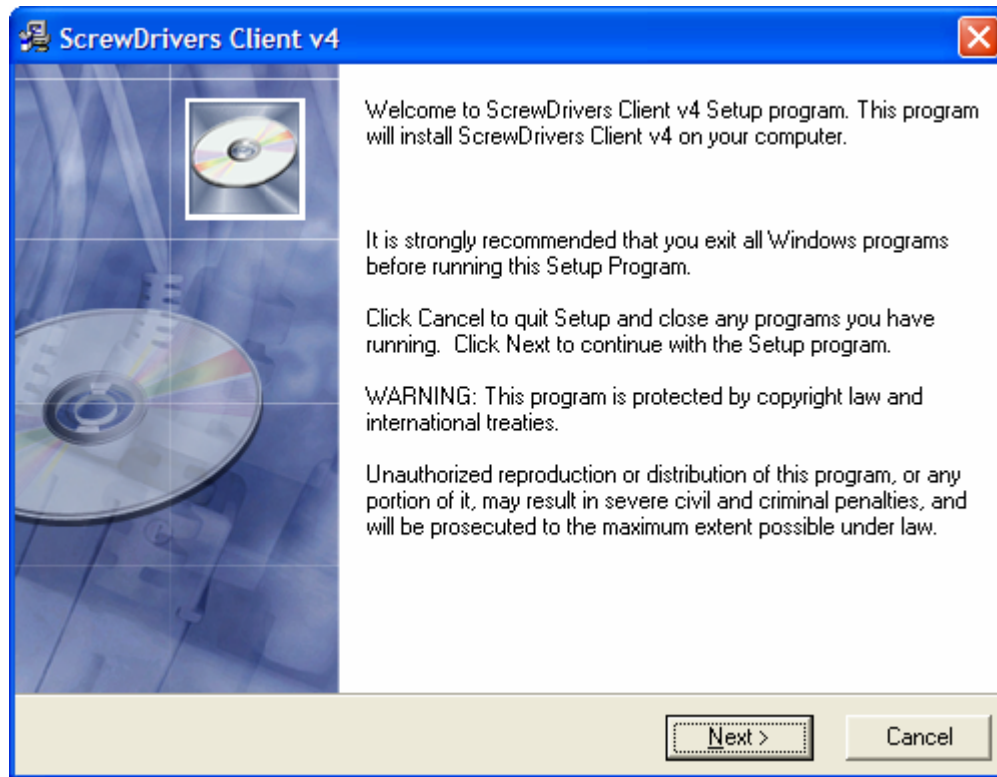
The File Download dialog box appears:



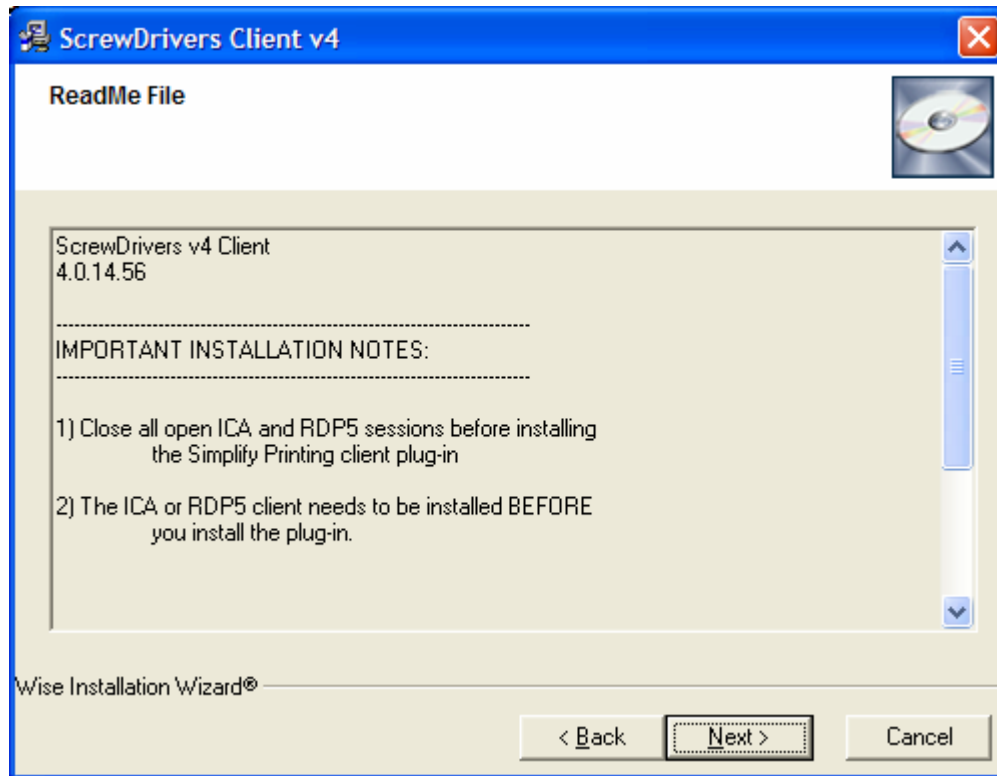
2. Press the **Run** button to run the install program. The Security Warning dialog box will appear:



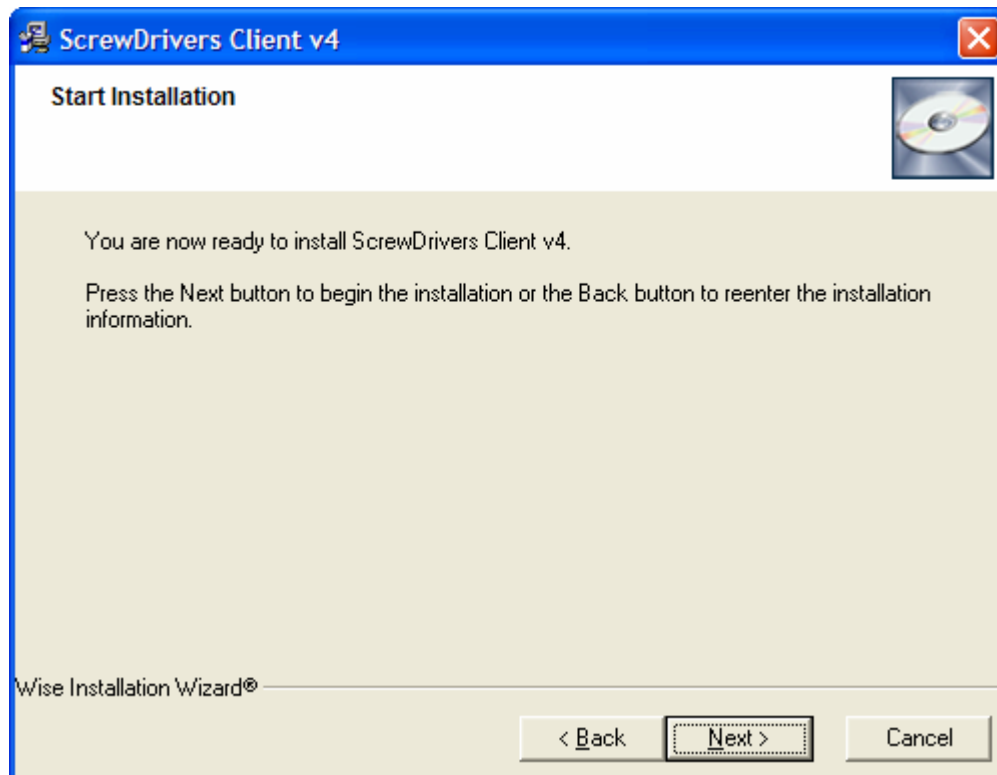
3. Press the **Run** button to allow the install program on the workstation.
4. The setup program appears. Press the **Next** button.



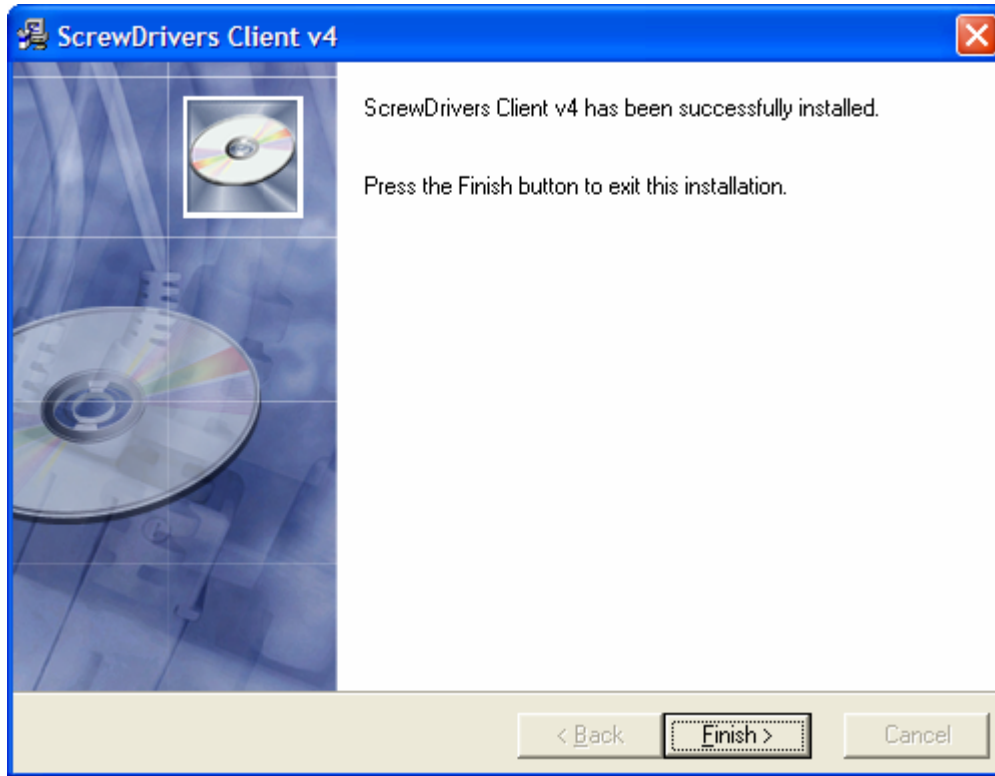
5. Press the **Next** button.



6. Press the **Next** button.



7. Press the **Next** button.



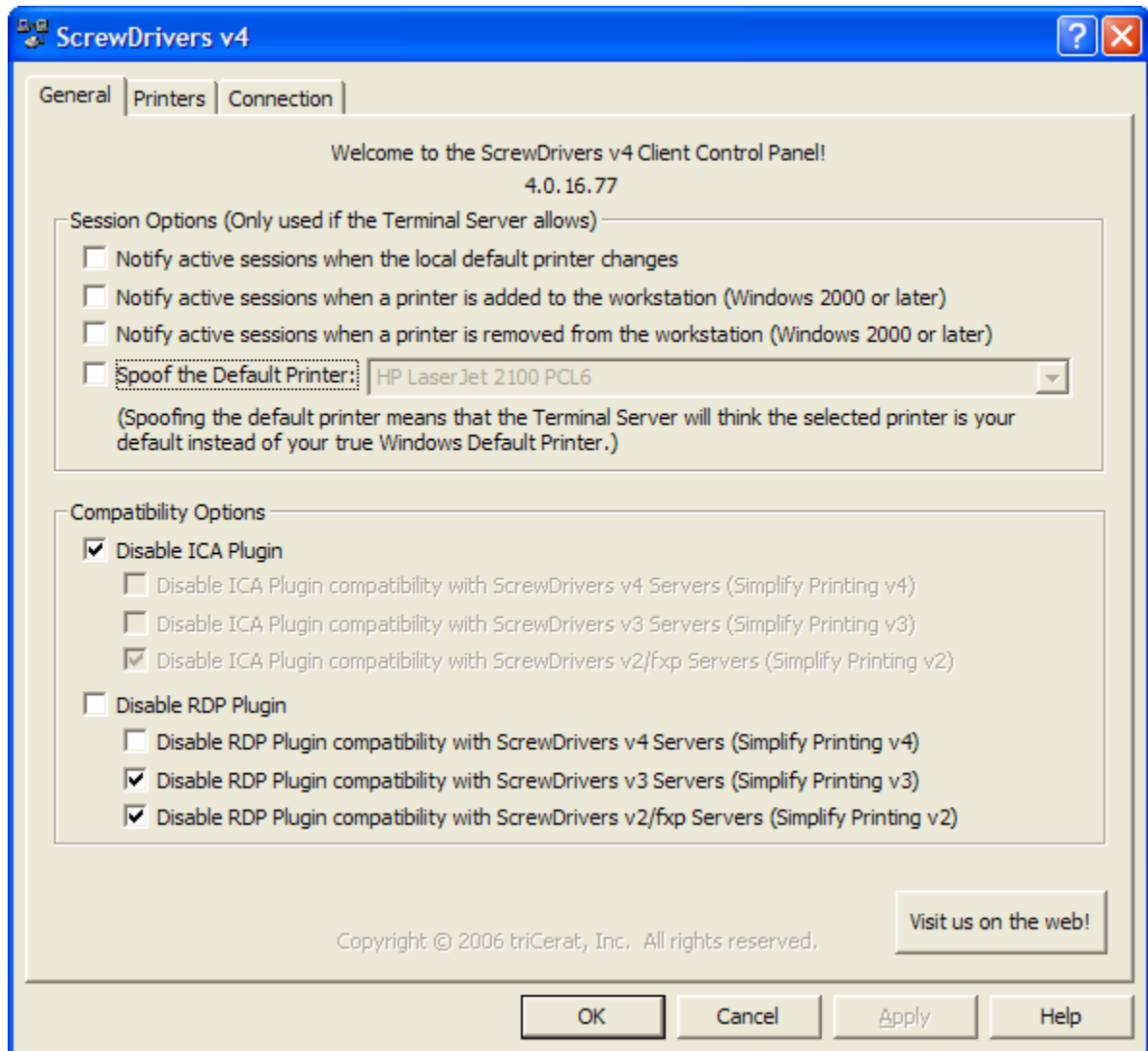
8. Press the **Finish** button to complete the installation.
9. Run the `SCREWDRIVERS.REG` file. This enables the ScrewDrivers client to work for all users of the workstation.

### 3.0 Configure the ScrewDrivers Client

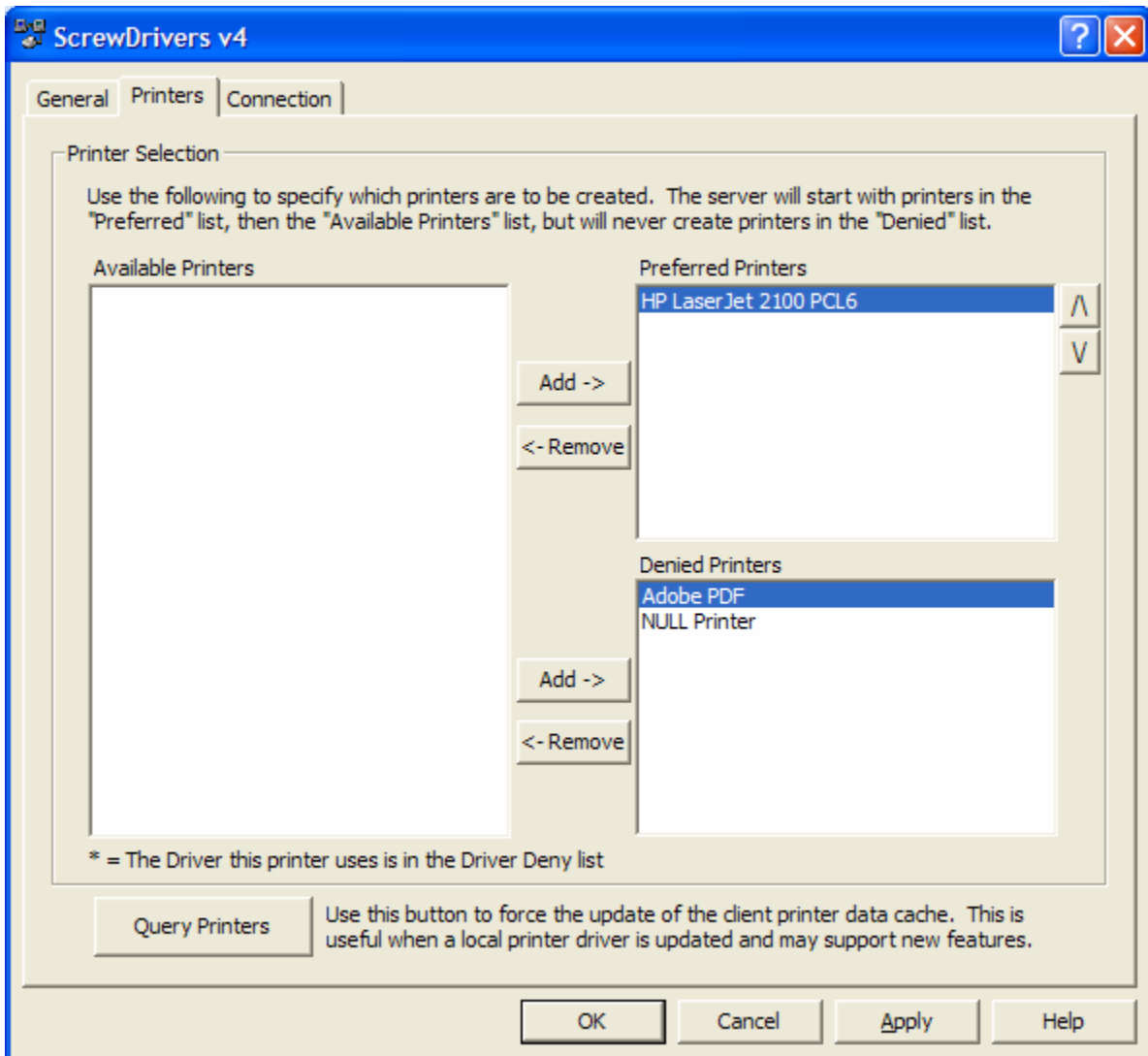
The ScrewDrivers client application must be configured for each user to pass certain printers to the Terminal Server.

Use the following instructions to install the ScrewDrivers client on each workstation:

1. Log in to a workstation account that will access the Terminal Server.
2. Open the "ScrewDrivers Client" applet in the Windows Control Panel.



3. Uncheck all of the checkboxes in the “Session Options” section.
4. Check the “Disable ICA Plugin” check box in the ‘Compatibility Options’ section.
5. Check the “Disable RDP Plugin compatibility with ScrewDrivers v3...” check box.
6. Check the “Disable RDP Plugin compatibility with ScrewDrivers v2/fxp...” check box.
7. Select the “Printers” tab. This tab is used to specify which specific printers to use with the Terminal Server session and which printers will not be used.



8. Highlight the printers in the “Available Printers” list that should be available to the Terminal Server and press the top-most **Add** button. The selected printers will move to the “Preferred Printers” list.
9. Select the remaining printers in the “Available Printers” list and press the bottom-most **Add** button to prevent the terminal server from seeing these printers.
10. Press the **OK** button to save the changes.